

PERFECT ROUND HOLES
 CONCENTRIC &
 ACCURATE HOLES
 HOLE TAPER CONTROLLED
 NO ANGLE LIMIT
 NO BURNING EFFECT
 NO MATERIAL ALTERATION
 WITHOUT ENTRANCE AND
 EXIT DEFORMATION
 HIGH
 PRODUCTIVITY QUALITY
 HIGH
 QUALITY SURFACE
 HIGH
 PRECISION FINISHING

3D μEDM

IF YOU NEED
 THIS TOP
 PERFORMANCE
 WITH REDUCED
 MACHINING
 TIMES, WITHOUT
 MATERIAL
 ALTERATION,
 CALL SARIX
 OR
 VISIT US
 @
WWW.SARIX.COM

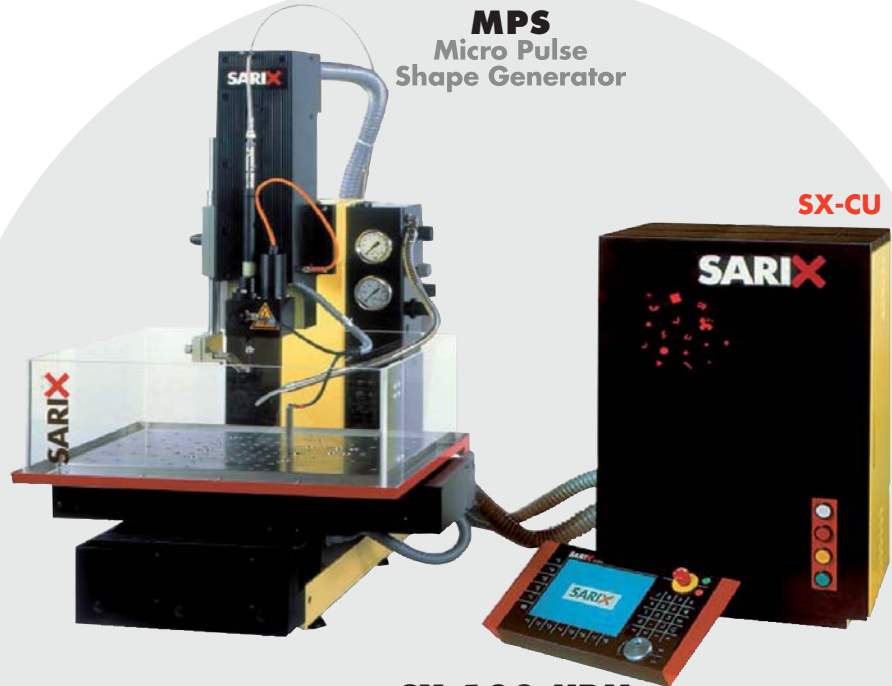
SARIX SA
 6616 LOSONE
 SWITZERLAND
 TEL. +41 91 785 81 71
 FAX +41 91 785 81 77
 www.sarix.com

THE BEST MICRO EROSION
 TECHNOLOGY

SARIX
3D μEDM Milling

SX-100

3D HIGH PRECISION MICRO EROSION MACHINE



MPS
 Micro Pulse
 Shape Generator

SX-CU

SX-100-HPM
 AUTOMOTIVE
 TEXTILE
 MICRO MOLDS
 MICRO MECANICS
 AEROSPACE
 MEDICAL
 MICRO ELECTRONIC

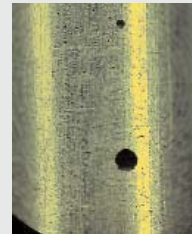
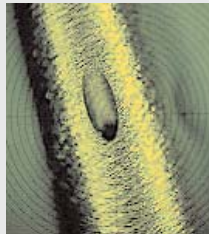
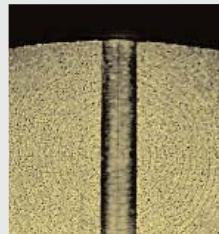
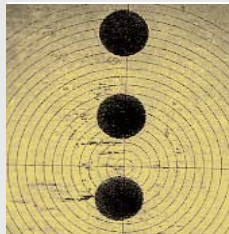
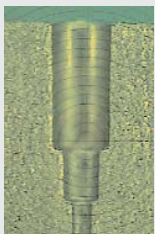
- The capacity of the **SX-100** machine brings new innovative "multi-axis-motion" as the **3D high precision Micromachining**.
- The multi-axis CNC allows the indexing of complex work pieces where the performance of the **Micro EDM Machining** is requested.
- "High production capability concept" through an efficient Multifunct Micro Machining machine with; slide W-axis (Z2), C-indexing spindle, A/B positioning indexing axis and multiple hole sequence process...
- **SX-MMI**, "On-board", easy and user friendly unlimited programming and editing software.
- The high performance **SARIX Micro Pulse Shape EDM** generator **SX-MPS**, with its associated Technology opens up new opportunities for smaller, deeper and more precise perfect holes.
- **Micro EDMing** machining technology with solid and tube electrode from **45 Microns** to 3.0 mm.
- **Micro Holes**, high Precision Micro holes and shape holes down to **20 Microns**
- High surface finishing capability down to Ra 0.1 and Ra 0.05 with the **Micro Fine Pulse Shape** generator **SX-MFPS**.
- High precision positioning accuracy up to **±1 Micron**.
- Automatic axis positioning control with depth control.
- High precision Automatic electrode refeeding spindle with dielectric or air clamping control for continuous production.
- **High Speed Micro EDM drilling** Technology with breakthrough-detection device.

TECHNICAL SPECIFICATIONS

Machine	SX-100 HPM	
Type	High Precision	
Work table mm	L 510	I 270
Travel X axis mm	250	
Travel Y axis mm	150	
Travel Z axis mm	150	
Travel W (Z2) axis	150	
Z axis feed rate mm/min	600 max	
X-Y axis feed rate mm/min	600 max	
Precision of positioning	± 2.0 µm	
Resolution	0.1 µm	
Table load/weight	~ 20 kg	
Net weight	~175 kg	
Dimensions mm	L 700	I 800
		h 1200

	SX-MPS	SX-HPS
Generator	MICRO PULSE SHAPE	HIGH PULSE SHAPE
Freerun voltage	60 ÷ 255 V	fixed voltage
Frequency	1 ÷ 250 pos.	1 ÷ 100 pos.
Current pulse	1 ÷ 200 pos.	1 ÷ 200 pos.
Dimensions mm	135 x 110 x 500	
Control Unit	SX-CU	
Power supply	230 V / 50 Hz	
Nominal power	650 VA	
Dimensions mm	450 x 400 x 690	
Dielectric Unit	SX-DA	
Capacity	25 liters	
Dielectric	deionised water or oil	
Dimensions mm	500 x 780 x 650	

Our specifications are subject to any change, giving you a continuous technological advantage



In the region where avant-garde technology has made EDM history.



TYPICAL CONFIGURATION SX-100 Micro EDM Drilling

- **SX-100-HPM** machine including **SX-MPS**, Micro Pulse Shape Generator
- **SX-CU**, CNC Control UNIT with **SX-ICON**, Software Icon Editor for free programming
- **SX-KBS**, Knowledge Base - Data Base- software
- **SX-PL**, Multi-axis-erosion software X-Y-Z axis with extended planetary-orbiting functions
- **SX-DA**, Dielectric unit with conductivity and temperature control for mass production (for deionised water or dielectric oil)
- **SX-HP**, High pressure flushing unit 70 bars
- **SX-ROT**, High precision rotation axis with 3R Macro chuck
- **SX-PG**, Precision guide holder

SX-CU CNC CONTROL UNIT

- **SX-CU**, controller with enhanced Automatic Configuration, unlimited program capacity
- Unlimited program capacity; number, length and calls
- **Free and unlimited Micro EDM technology settings**
- **SX-MMI**, "On board" friendly user editing and programming capability
- High quality 8.4" TFT color display, 3.5" floppy disc Ethernet connection
- Virtually up to 16 axis CNC control within 4 axis on simultaneous motion
- Standard X,Y,Z and rotation speed axis control (W,A,B,C...optional)

OPTIONS

- **SX-MFPS**, Micro Fine Pulse Shape generator for Micro Fine Machining with ultrafine finishing
- **SX-HPS**, High Power Pulse Shape generator for higher stock removal
- **SX-A344-L series**, High precision rotating spindle with Automatic electrode refeeding and wear compensation with through flushing function
- **SP 06 & SP 08** collets for SX-A344 automatic spindle down to **45 Microns**
- **SP-MDC**, Multi diameter automatic refeeding collet 0.2-1.0 mm
- **SX-W**, CNC Programmable W-backslide axis (Z2) for guide holder height position
- **SX-C-RHP**, High Precision Rotating and indexing C axis
- **SX-TH**, "Tilting Head" device for SX-A344 Rotating spindle with the SP08 collet type
- **SX-DNC**, Sequencer software for unlimited programmable number of holes
- **SX-AB100C**, High precision single or double indexable and programmable A/B-axis, designed for submerged conditions
- **SX-MDH**, Micro Deep Hole drilling device - depth ratio 100-150 time
- **SX-ARIANNE**, Wire grinding device for the automatic production of Micro electrode for Micro holes and shape holes down to 10 Microns
- **SX-EAD**, Electrode Automatic Distributor device

ACCESSORIES

- **SP 01**, High precision collet with centering device
- **SP 02**, High precision collet
- **SG 01**, High precision ceramic guide
- High precision solid carbide electrodes down to 45 Microns
- High precision solid carbide electrodes and tubes
- Brass & Copper single holes and coreless electrodes tubes
- Tooling, fixtures, microscopes, instruments, filters...
Special shaped and complex form according your drawing...